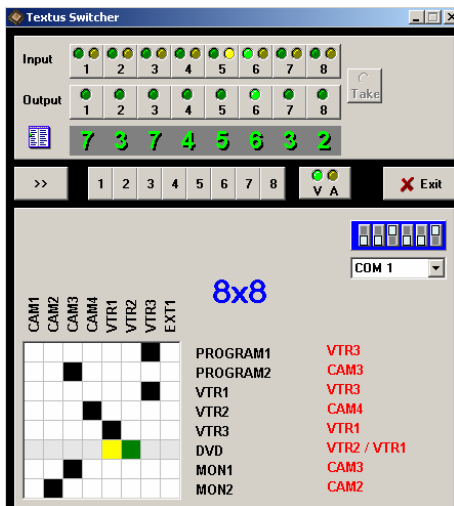


SD SDI 8x8 MATRIX SWITCHER VM624



VM624 is multi standard 8x8 SD SDI matrix switcher with cable equalizing and reclocking. It operates with 8 or 10 bit at any of 147MB/s, 177MB/s, 270MB/s or 360MB/s speed. Standard recognition is automatic. Embedded audio passes-through as well. Switcher offers automatic equalization of long cable losses. There are three ways to control the matrix:

- using front panel touch keys;
- using remote control panels up to 100m away;
- using remote control computer.

It is possible to use two switching modes – either simply pressing any source or using TAKE button. All of the controlling ways can operate simultaneously at the same time. Matrix VM624 provides switching between sources in vertical blanking interval. An analog Black Burst (or video) reference input provides switching control with vertical blanking interval.

Matrix can be factory configured as:

- 8_{IN} X 8_{OUT};
- 8_{IN} X 4_{OUT} with two BNC on each output;
- 8_{IN} X 2_{OUT} with four BNC on each output.

Special customer marks for each key can be inserted under the cap. Front panel buttons are illuminated by back green light. VM624 matrix can operate with analog video 8x8 matrix VM67 and audio 8x8 matrix VM69 simultaneously as the layers. Video and audio sources can be separated. Remote control software for Windows is included.



Technical specifications:

Inputs:	8 equalized SMPTE 259M on BNC connectors 1 reference (Black Burst or video) on BNC connector
Outputs:	8 reclocked SMPTE 259M on BNC connectors
Cable length equalizing:	up to 200m
Control from:	front panel, remote control panel, computer
Standard control:	auto
Switching:	in vertical blanking interval (with reference signal)
Dimensions:	483x44x230mm (19", 1U)
Weight:	2,5kg

Vilniaus g. 215/15, Šiauliai LT-76348, Lithuania

www.textus.lt

E-mail: info@textus.lt

Tel: +37041-525930

Fax: +37041-525930