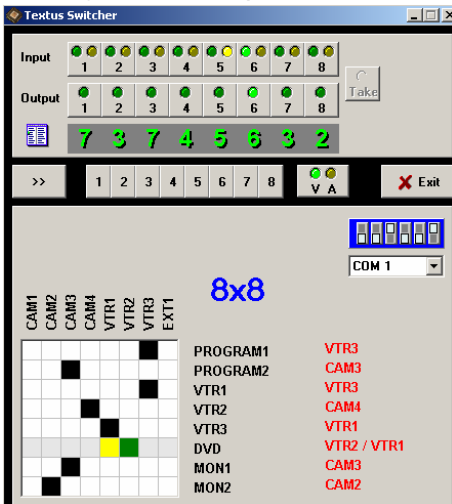


## HD/SD SDI, ASI 8x8 MATRIX SWITCHER VM119

Matrix VM119 switches 8 input signals to 8 outputs. Reference input provides clean switching in vertical blanking interval. All inputs are equalized (allow to compensate long cable losses) and all outputs - relocked. Embedded audio passes-through as well. It is possible to use two switching modes – either simply pressing any source key or using *TAKE* button. Switcher allows to connect remote control panels (19", 1U) and computer, which controls every output line. Remote control software for Windows is included. Switcher also offers a possibility to disable front panel buttons. In that case control comes from remote control panels and computer. For switching video and audio signals at the same time (*AUDIO FOLLOW VIDEO*), layers of audio and video matrix switchers can be used. In that case both switchers are controlled by any button, related to any sources. Video and audio sources can be separated. Special customer marks for each key can be inserted under the cap. Statuses of the buttons are memorised (turning power off/on does not influence the state of the matrix). Front panel buttons are illuminated by back green light.



### Technical specifications:

Inputs:	8 equalized SMPTE-292M/259M/344M on BNC connectors 1 reference (Black Burst or tri-level sync) on BNC with loop-through connector and 75Ω load on/off
Outputs:	8 relocked SMPTE-292M/259M/344M on BNC connectors
Cable length equalizing:	SD SDI – up to 340m HD SDI – up to 120m
Standard control:	auto
Switching:	in vertical blanking interval (with reference signal)
Control from:	front panel, remote control panel, computer
Power:	~220V, 20VA
Dimensions:	483x44x150mm (19", 1U)
Weight:	2,0 kg

Vilniaus g. 215/15, Šiauliai LT-76348, Lithuania

[www.textus.lt](http://www.textus.lt)

E-mail: [info@textus.lt](mailto:info@textus.lt)  
Tel: +37041-525930  
Fax: +37041-525930